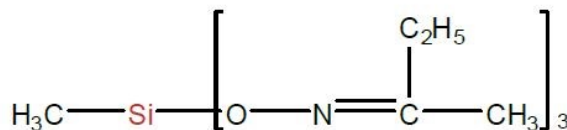


## SILSOURCE SS-4032

Methyltris(methylethylketoximino)silane

### PRODUCT DESCRIPTION

SS-4032 is a colorless or yellowish transparent liquid.



### TYPICAL PRODUCT DATA

(not intended for use in preparing specifications)

Property	Value
Appearance	Colorless or light yellow transparent liquid
Min. Purity	97.0%
Refractive Index	1.4500~1.4560
Colour (Hazen)	30 Max.
Content of MEKO	1.0 Max.
Content of dimer	2.0% Max.

### TYPICAL FEATURES AND APPLICATIONS

SS-4032 is used as a neutral curing agent in silicone sealant formulations. Generally, this silane is used for crosslinking  $\alpha,\omega$ -silanol polydimethylsiloxanes in the presence of atmospheric moisture.

SS-4032 is often the main crosslinker of choice for oxime silicone sealants and can be used by itself or in combination with other oxime silanes to provide the sealant with targeted properties (such as desired cure rate, adhesion etc).

The product will cross-link when contacting water and generates 2-butanone oxime.

### INFORMATION FOR USE

SS-4032 has a shelf life of one year in the unopened original container.

SS-4032 should be stored in a cool and dry place.

### PACKAGING

SS-4032 is supplied in net weight 190Kg steel drums or net weight 950Kg IBC totes.

#### PRODUCT SAFETY INFORMATION

PRODUCT SAFETY INFORMATION REQUIRED FOR SAFE USE IS NOT INCLUDED IN THIS DOCUMENT. BEFORE HANDLING, READ PRODUCT AND SAFETY DATA SHEET AND CONTAINER LABELS FOR SAFE USE, PHYSICAL, ENVIRONMENTAL, AND HEALTH HAZARD INFORMATION.

#### LIMITATIONS

Not intended for human injection. This product is neither tested nor represented as suitable for medical or pharmaceutical uses.

#### LIMITED WARRANTY INFORMATION – PLEASE READ CAREFULLY

The information contained herein is offered in good faith and is believed to be accurate. However, because conditions and methods of use of our products are beyond our control, this information should not be used in substitution for customer's tests to ensure that our products are safe, effective, and fully satisfactory for the intended end use. Suggestions of use shall not be taken as inducements to infringe any patent.

SILSOURCE Inc.'s sole warranty is that the products will meet the sales specifications in effect at the time of shipment. Your exclusive remedy for breach of such warranty is limited to refund of purchase price or replacement of any product shown to be other than as warranted.

SILSOURCE INC. SPECIFICALLY DISCLAIMS ANY OTHER EXPRESS OR IMPLIED WARRANTY OF FITNESS FOR A PARTICULAR PURPOSE OR MERCHANTABILITY.

SILSOURCE INC. DISCLAIMS LIABILITY FOR ANY INCIDENTAL OR CONSEQUENTIAL DAMAGES.