

SC-5012

3-Chloropropyltriethoxysilane

PRODUCT DESCRIPTION

SC-5012 or 3-Chloropropyltriethoxysilane is not only an essential intermediate for the synthesis of other functional silanes but also an important silane coupling agent for various industries.

TYPICAL PRODUCT DATA*

* Value when leaving plant

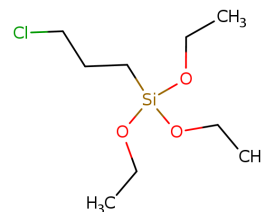
Property	Unit	Typical Value
CAS#	-	5089-70-3
Formula	-	C ₉ H ₂₁ ClO ₃ Si
Purity	%	≥99%
APHA	-	≤30
Refractive index (25°C)	-	1.420
Density (25°C)	g/cm ³	1.00
Appearance	-	Colorless transparent liquid

* These values are not intended to be used as specifications but as suggested characteristics

PACKAGING AND AVAILABILITY

SC-5012 is available in 200 Kg drums and 1000 Kg IBC tote containers.

TECHNICAL DATA SHEET



TYPICAL FEATURES AND APPLICATIONS

SC-5012 can be used as a silane coupling agent to improve the bonding performance of organic polymers such as epoxy, polyurethane, polyamide and other adhesives on inorganic substrates.

SC-5012 can be used as an important rubber additive for advanced silicone rubber products.

SC-5012 can be used for the surface treatment of glass fibers. Mechanical properties and chemical properties of composites can be greatly enhanced.

SC-5012 can be used as an intermediate for the synthesis of other functional organosilanes and organosilicon compounds.

INFORMATION FOR USE

N/A

SHELF LIFE AND STORAGE

Store in cool place. Keep container tightly closed in a dry and well-ventilated place. Containers which are opened must be carefully resealed and kept upright to prevent leakage. Moisture sensitive. SC-5012 has a shelf life of 12 months

PRODUCT SAFETY INFORMATION REQUIRED FOR SAFE USE IS NOT INCLUDED IN THIS DOCUMENT. BEFORE HANDLING, READ SAFETY DATA SHEET AND CONTAINER LABELS FOR SAFE USE, PHYSICAL, ENVIRONMENTAL, AND HEALTH HAZARD INFORMATION.

LIMITATIONS: Not intended for human injection. This product is neither tested nor represented as suitable for medical or pharmaceutical uses.

Limited Warranty: Silsource Inc. warrants to Buyer that for a period of 12 months from the date of manufacture of the products, such products will materially conform to Silsource Inc.'s specifications in effect as of the date of manufacture. This warranty does not apply where the products have (a) been subjected to abuse, misuse, neglect, negligence, accident, improper testing, improper installation, improper storage, improper handling, abnormal physical stress, abnormal environmental conditions, or use contrary to any instructions issued by Silsource Inc.; (b) been reconstructed, repaired, or altered by persons other than Silsource Inc. or its authorized representatives; or (c) been used with any third-party product or hardware that has not been previously approved in writing by Silsource Inc. Buyer's exclusive remedy for breach of the limited warranty shall be a refund of the purchase price or replacement of the product, at Silsource Inc.'s sole discretion.

Disclaimer: EXCEPT FOR THE EXPRESS LIMITED WARRANTY SET OUT ABOVE, SILSOURCE INC. MAKES NO WARRANTY WHATSOEVER WITH RESPECT TO THE GOODS, INCLUDING ANY (A) WARRANTY OR CONDITION OF MERCHANTABILITY; (B) WARRANTY OR CONDITION OF FITNESS FOR A PARTICULAR PURPOSE; (C) WARRANTY OR CONDITION OF TITLE; OR (D) WARRANTY AGAINST INFRINGEMENT OF INTELLECTUAL PROPERTY RIGHTS OF A THIRD PARTY, WHETHER EXPRESS OR IMPLIED AND WHETHER ARISING BY LAW, COURSE OF DEALING, COURSE OF PERFORMANCE, USAGE OF TRADE, OR OTHERWISE. BUYER ACKNOWLEDGES THAT IT HAS NOT RELIED UPON ANY REPRESENTATION, CONDITION, OR WARRANTY MADE BY SILSOURCE INC., OR ANY OTHER PERSON ON SILSOURCE INC.'S BEHALF, EXCEPT AS SPECIFICALLY PROVIDED ABOVE.